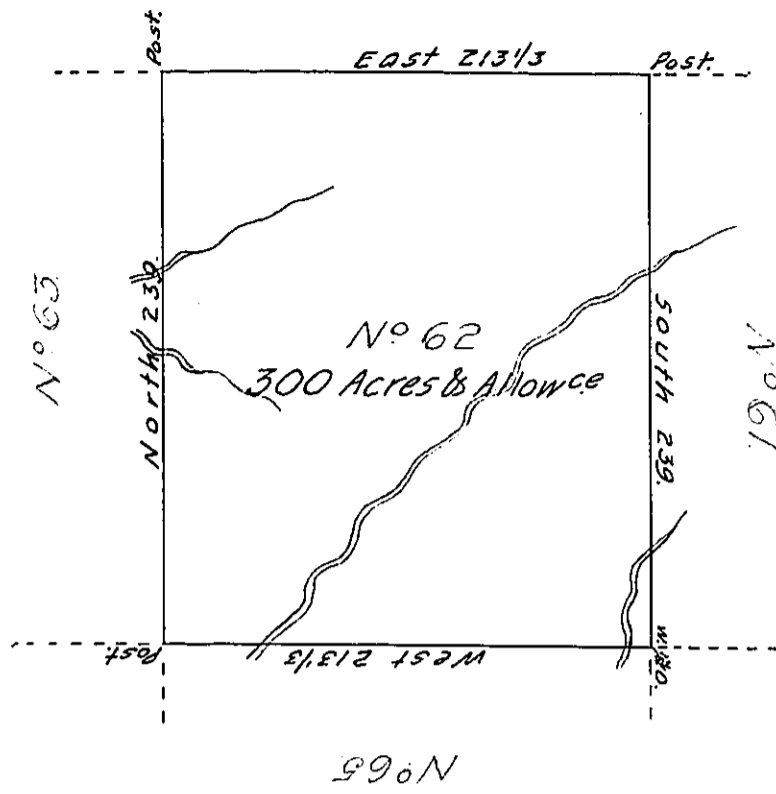


✓

N<sup>o</sup> 59. -58



Situate on the Waters of Brush Creek Between the fourteenth & fifteenth Parallel-  
 in that Part of District N<sup>o</sup> 3 to me Allotted on the North side of the Ohio River, being  
 Part of the Land Appropriated for the Redemption of the Certificates of depreciation  
 &c<sup>o</sup> Surveyed in June 1785. Pursuant to Instructions from John Lukens, Sur-  
 veyor Genl dated at Philad: 5. March 1785.

Nat! Breeding, D.S.

IN TESTIMONY that the above is a copy of the original remaining on file in  
 the Department of Internal Affairs of Pennsylvania, made  
 conformably to an Act of Assembly approved the 16th day of  
 February, 1833, I have hereunto set my Hand and caused  
 the Seal of said Department to be affixed at Harrisburg,  
 this seventeenth day of April 1906.

*Isaac R. Brown*  
 Secretary of Internal Affairs.